



Marathon Sealing FZE
Ajman Free Zone
SM-Office B1 - 419H
P.O.Box:40489
Tel: 0097 16 7454642
Fax: 0097 16 7454643
Ajman – UAE
info@marathonsealing.com
www.marathonsealing.com



Marathon Method Statement of Work

Asphalt Crack sealing maintenance with Hot Applied rubberized sealant material

- 1- Surrounding pavement shall be in Min. 70% good condition or Min. PCI 70.
- 2- Jobsite selection and types of cracks to be addressed and suitability for crack sealing are:

- Longitudinal & Lateral Cracks
- Transverse Cracks
- Thermal Cracks
- Blocking Cracks (with low and Medium Tension)
- Crack Width: Starting from 4 mm to Max. 30 mm

The following cracks are not suitable for the sealing jobs:

- Alligator Cracks
- Blocking Cracks with high tension
- Cracks resulting from the failure of base layers and settlement

Procedures:

Item 1 – CREATION OF THE RESERVOIR BY MARATHON CRACK ROUTER CR260-300 K – DRY ROUTING

Routing and creating reservoir on the existing cracks with the router machine Marathon CR 260K with a nominal 15 mm to Max. 30 mm width, and Maximum depth of 20 mm.

If the width of the crack is less than 10 mm, rout the crack to the depth of 10 mm, if the width is more, rout to Max. 20 mm.

Operator can guide the router on the cracks and follow them.





Marathon Sealing FZE
Ajman Free Zone
SM-Office B1 - 419H
P.O.Box:40489
Tel: 0097 16 7454642
Fax: 0097 16 7454643
Ajman – UAE
info@marathonsealing.com
www.marathonsealing.com

Item 2 – CLEANING OF THE ROUTED CRACK IN TWO STEPS

STEP 1-

Cleaning of the surface and surrounding pavement of the routed crack/joint out of any debris by WIND BLOWER:



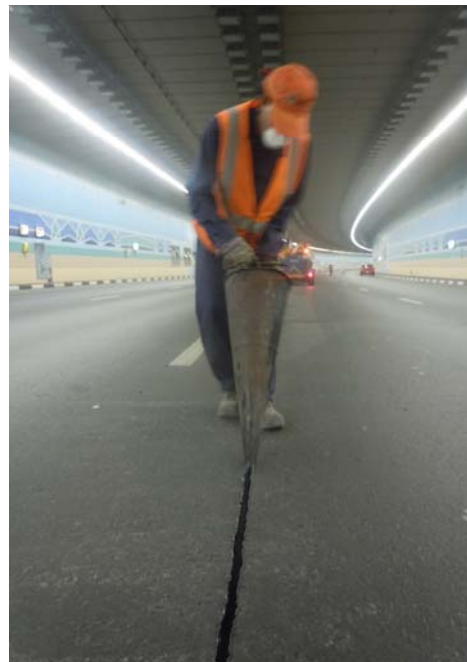
STEP 2-

Cleaning inside of the routed joint/crack with air compressor out of any loose material or debris before application of the sealant, simultaneously heating the crack with Hot Air Lance using Gas cylinder.



Item 3 – APPLICATION OF HOT APPLIED RUBBERIZED SEALANT MATERIAL WITH OIL JACKETED KETTLE EQUIPPED WITH CONES - UCMK series

Supply & apply of the sealant material D200 per attached technical specification at recommended application temperature into the routed crack/joint (Sealant material supply by the contractor) with the specialized Oil Jacketed Kettle (Marathon UCMK245 DT) using cones. The material will be heated through thermal oil indirectly. Kettle is equipped with oil jacketed tank for indirect heating of the material as well as Hydraulic system for constant agitation and movement. The kettle is equipped with the thermostat, material, and oil temperature control gauges. (Kettle Catalog is attached). The sealant surface with pavement will be checked after cooling, if the refill is needed.





Marathon Sealing FZE
Ajman Free Zone
SM-Office B1 - 419H
P.O.Box:40489
Tel: 0097 16 7454642
Fax: 0097 16 7454643
Ajman – UAE
info@marathonsealing.com
www.marathonsealing.com

Item 4 – MANUAL SPREADING OF PORTLAND CEMENT POWDER ON TOP OF THE APPLIED MATERIAL FOR FASTER CURING TIME (IF NEEDED TO BE OPENED TO TRAFFIC IN NO TIME)

If needed, apply normal Portland cement on top of the sealed cracks in order to open the traffic faster on the jobs.



Item 5 – PERFORMED JOB MEASUREMENT

The performed jobs will be measured and preceded at each shift by both parties' representatives with measuring wheel based on LM of crack. Nominal 500 to 1000 crack sealing can be performed per full shift/day.



Linear Meter of

With Regards,
Farzad Tooryani
Marathon Sealing FZE
Cell. 0097-150-2780016

